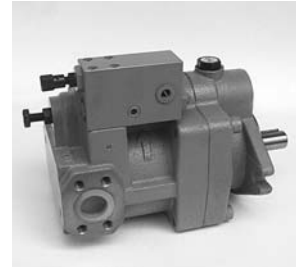


LOAD SENSING CONTROL TYPE

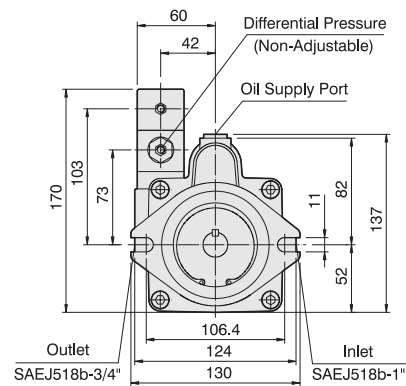
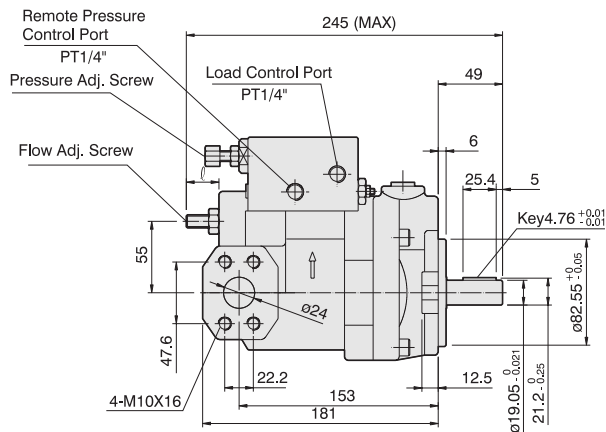
KCL® world-best-pumps
HYDRAULIC EQUIPMENTS

P16-HL3-F-R-01

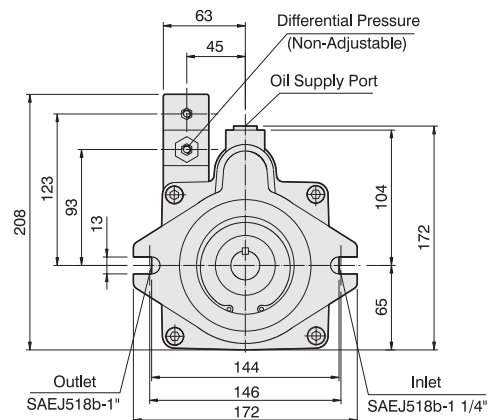
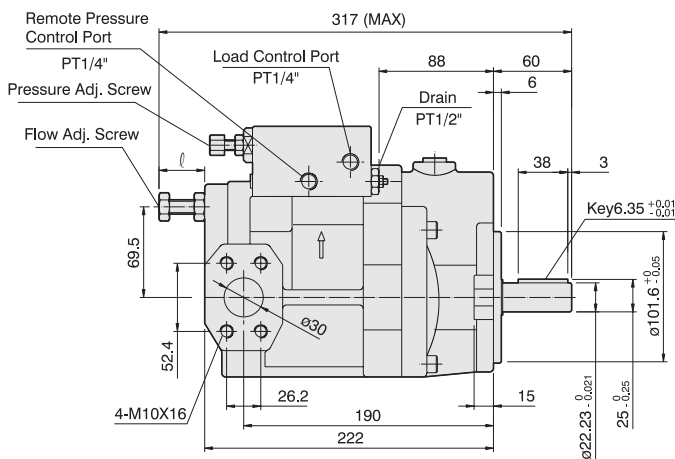
Design code		
Rotation	R : Clockwise(CW)	
Mounting	F : Flange mounting	L : Foot mounting
Pressure adj. range	2 : 30~145 kgf/cm ²	3 : 30~215 kgf/cm ²
Load sensing control type		
Displacement	08,16, 22, 36, 46, 70, 100, (cm ³ /rev)	



P16-HL-TYPE / P22-HL-TYPE



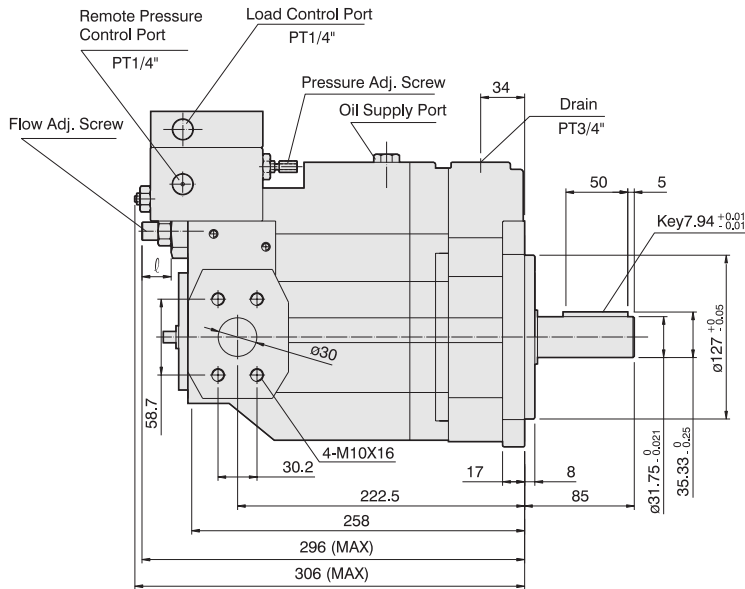
P36-HL-TYPE / P46-HL-TYPE



LOAD SENSING CONTROL TYPE

KCL® world-best-pumps
HYDRAULIC EQUIPMENTS

P70-HL-TYPE



P100-HL-TYPE

