

**KVM4\*D \ KVM4\*D1 - 138 - 1 N 00 - B 1 02 \***  
 ① ② ③ ④ ⑤ ⑥ ⑦ ⑧ ⑨ ⑩

① **Series external drain**

② **Series internal drain**

③ **Torque**

- 062 = 1.04 Nm/bar
- 074 = 1.22 Nm/bar
- 088 = 1.45 Nm/bar
- 102 = 1.68 Nm/bar
- 113 = 1.86 Nm/bar
- 128 = 2.11 Nm/bar
- 138 = 2.30 Nm/bar

④ **Type of shaft**

- 1-Keyed (SAE C)
- 3-Splined (SAE C)
- S-Splined (SAE J718C)

⑤ **Rotation**

N - Bi-directional

\*S = Severe duty motor  
 VM4D1-VM4SD1 : Drain port is plugged

**View from shaft end**

CW rotation A = inlet B = outlet  
 CCW rotation A = outlet B = inlet

⑥ **Porting combination**

00-standard

⑦ **Design letter**

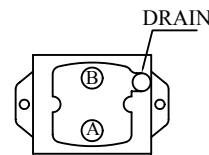
⑧ **Seal class**

- 1-S1 (KVM4D)
- 5-S5 (KVM4SD)

⑨ **Port connections**

- 01 = SAE threaded port  
SAE drain
- 02 = SAE 4 bolt flange  
UNC threaded - SAE drain
- 04 = SAE 4 bolt flange  
UNC threaded - BSPP drain
- M4 = SAE 4 bolt flange  
metric threaded - BSPP drain

⑩ **Modifications**



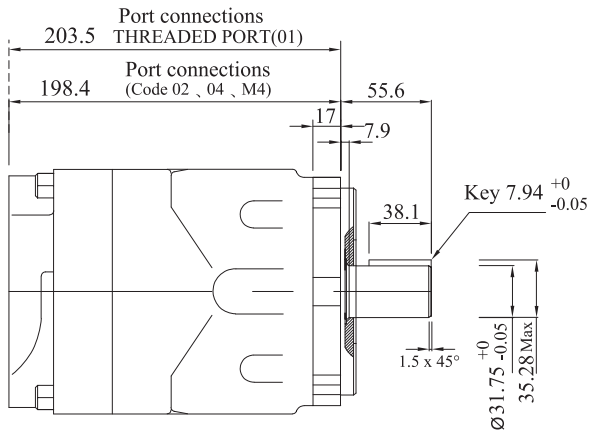
00

**Porting combination**

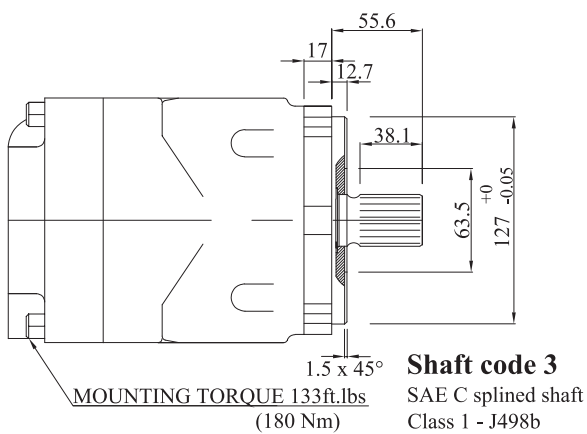
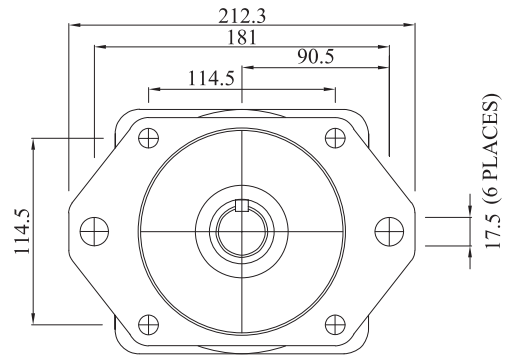
00-standard

**OPERATING CHARACTERISTICS - TYPICAL (24 cST)**

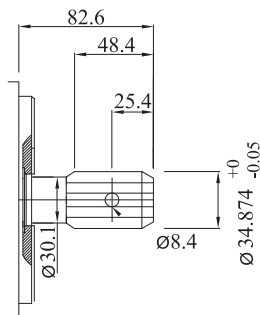
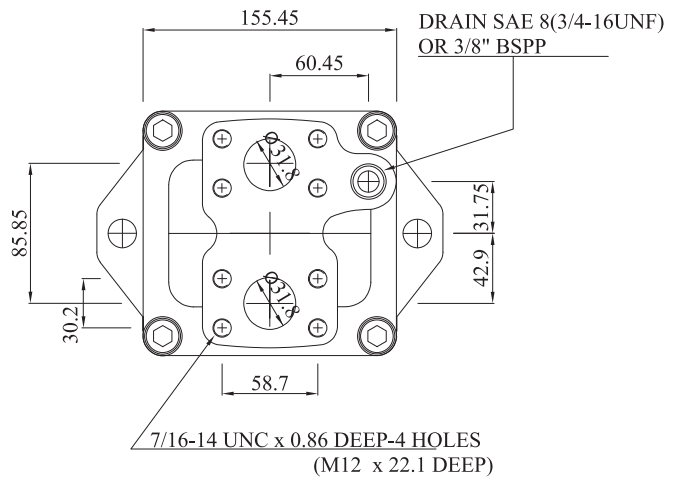
MODEL	Series	Volumetric Displacement Vi cm <sup>3</sup> /rev	Input flow at n=2000 rpm		Torque T n =2000 rpm		Power output n =2000 rpm		P Max Kg/cm <sup>2</sup>	Max r.p.m
			Theoretical	at 175 bar (2500psi) Δ p	at 175 bar (2500psi) Δ p		at 175 bar (2500psi) Δ p			
			ℓ / min	ℓ / min	in.lbs	Nm	HP	Kw		
KVM4D KVM4SD	062	65.1	130.0	154.0	1460.0	165.0	46.4	34.6	175	4000
	074	76.8	154.0	178.0	1770.0	200.0	56.2	41.9		
	088	91.1	182.0	206.0	2088.5	236.0	66.2	49.4		
	102	105.5	211.0	241.0	2336.3	264.0	74.1	55.3		
	113	116.7	233.0	257.0	2655.0	300.0	84.2	62.8		
	128	132.4	265.0	289.0	3009.0	340.0	95.5	71.2		
	138	144.4	289.0	313.0	3292.0	372.0	104.5	77.9		



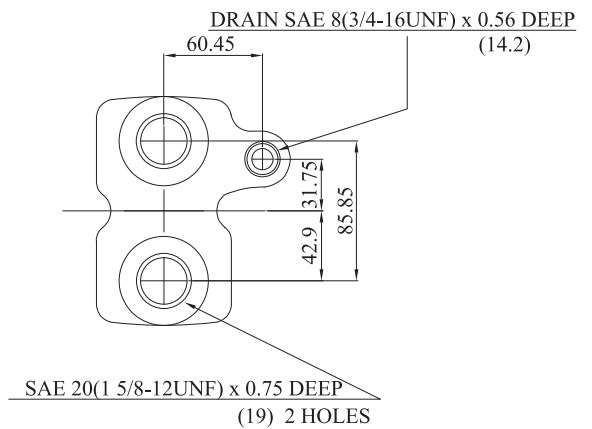
**Shaft code 1**  
(keyed SAE B)



**Shaft code 3**  
SAE C splined shaft  
Class 1 - J498b  
12/24 dp. 14 teeth  
30° pressure angle  
flat root side fit



**Shaft code S**  
ISO 500-3  
splined shaft  
16/32 dp. 21 teeth  
30° pressure angle  
flat root side fit.



**SAE THREADED PORT**